

Ralph's World of Hops

Ralph Olson
Hopunion LLC
203 Division St.
Yakima, WA 98902



Overview of what is to be covered

- Brief History Hopunion
- Commercial Growing
- Receiving at the warehouse
- Hop Fires
- Market Today and Tomorrow and the affect to the home-brewer
- Open Discussion



Hop Business

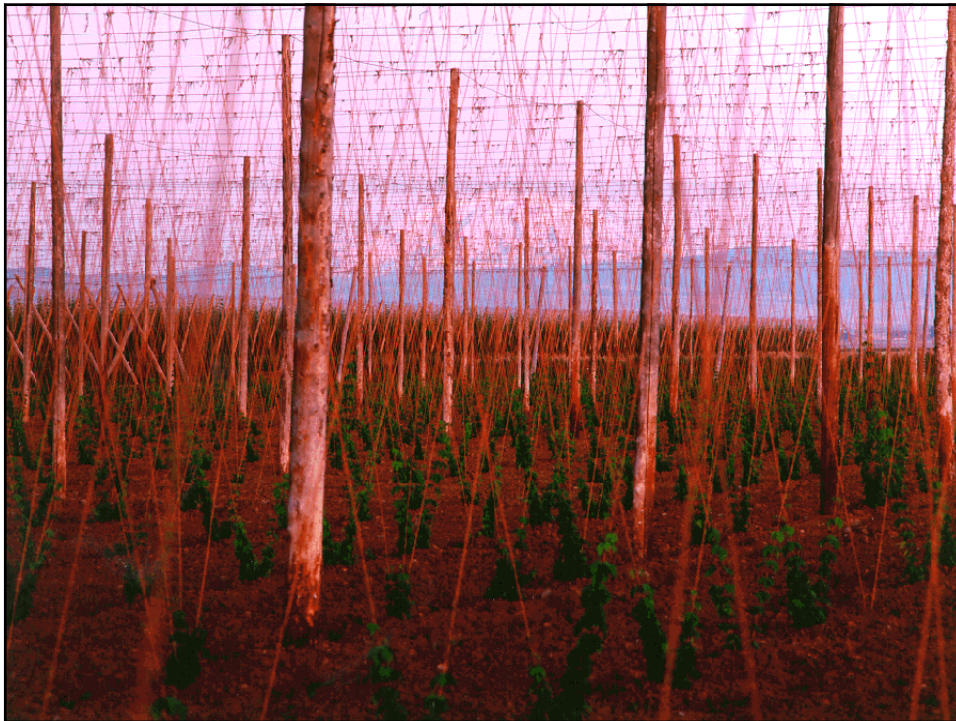


Commercial Production



Hop Basics

- Typical Field Setup:
 - Trellis 18' high
 - Plant spacing at 3.5' x 14' or 7' x 7'.
 - Result is 889 plants per acre
 - Anchored twine is used to support plant growth.
 - 40,000 acres = 270,000 miles twine
- The vine wraps clockwise around string.
- Rapid growth: The hop plant will grow a foot or more a day under ideal conditions. 18-25' in a season.
- Perennial-Can live for many years.





- Hops need lots of love and care!



Farming during the growing season

- Powdery mildew
- Downey mildew
- Spider mites
- Aphids
- Worms
- Weather- hot, cold, rain, hail, wind
- Others- viruses, viroids, nematodes, and it goes on.
- Where grown can have different problems.



Testing-Weekly

- Scouts looking at disease and insects
- Water specialists
- Tissue samples collected
- Main point-Farmers don't want to overdue anything as it does have a cost and can hurt the plant



Drip Irrigation



Hop Harvest



Harvesting Hops





Dribble Belt



Empty Kiln





Cooling




Heading to the Baler




Baling



Inspection at Warehouse



Testing for moisture with a tryer and meter



Inspection at Warehouse cont.



Evaluating a tryer sample



Inspection at Warehouse cont.

Testing for moisture with a meter



Inspection at Warehouse cont.



Inspection at Warehouse cont.



Chemical analysis



Inspection at Warehouse cont.



Weighing hop bales





Fire caused by spontaneous combustion



Warehouse fire 10/2/2006





Aftermath of a warehouse fire





Market Today and Tomorrow



Discussion Points

- Did anyone see shortage coming?
- How did shortage come about.
- What are the effects on Hi @ VS Aroma
- What is being done to reduce the problem
- Hops aren't available and then they are. Why?
- Why is the price so high
- What does the future hold?



Thank you!!

WWW.Hopunion.Com

